

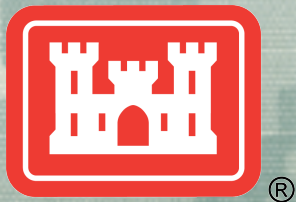
Moving to spatially-distributed modeling: Snow as a surrogate for some key challenges

Bert Davis

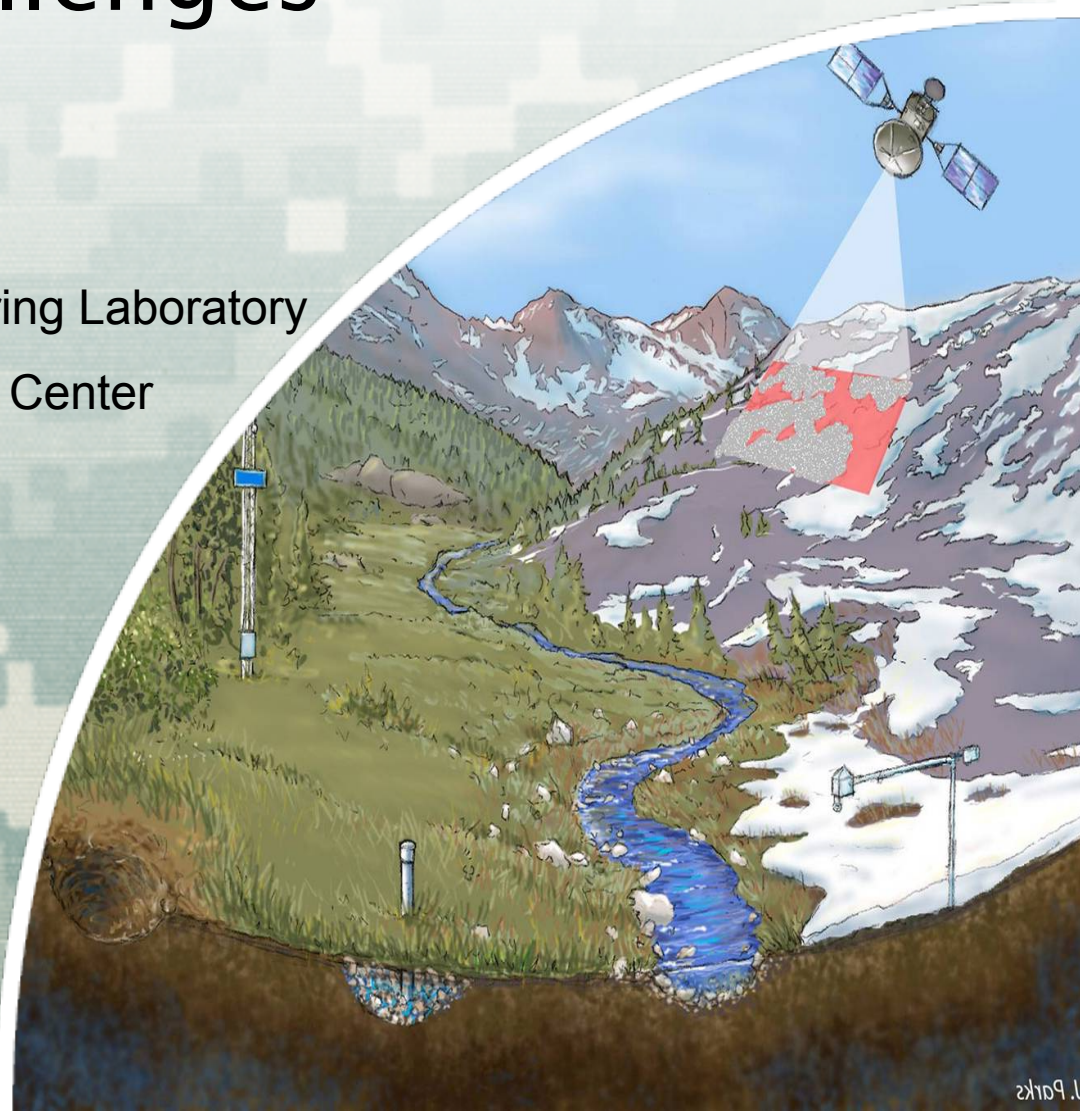
Cold Regions Research and Engineering Laboratory

Engineer Research and Development Center

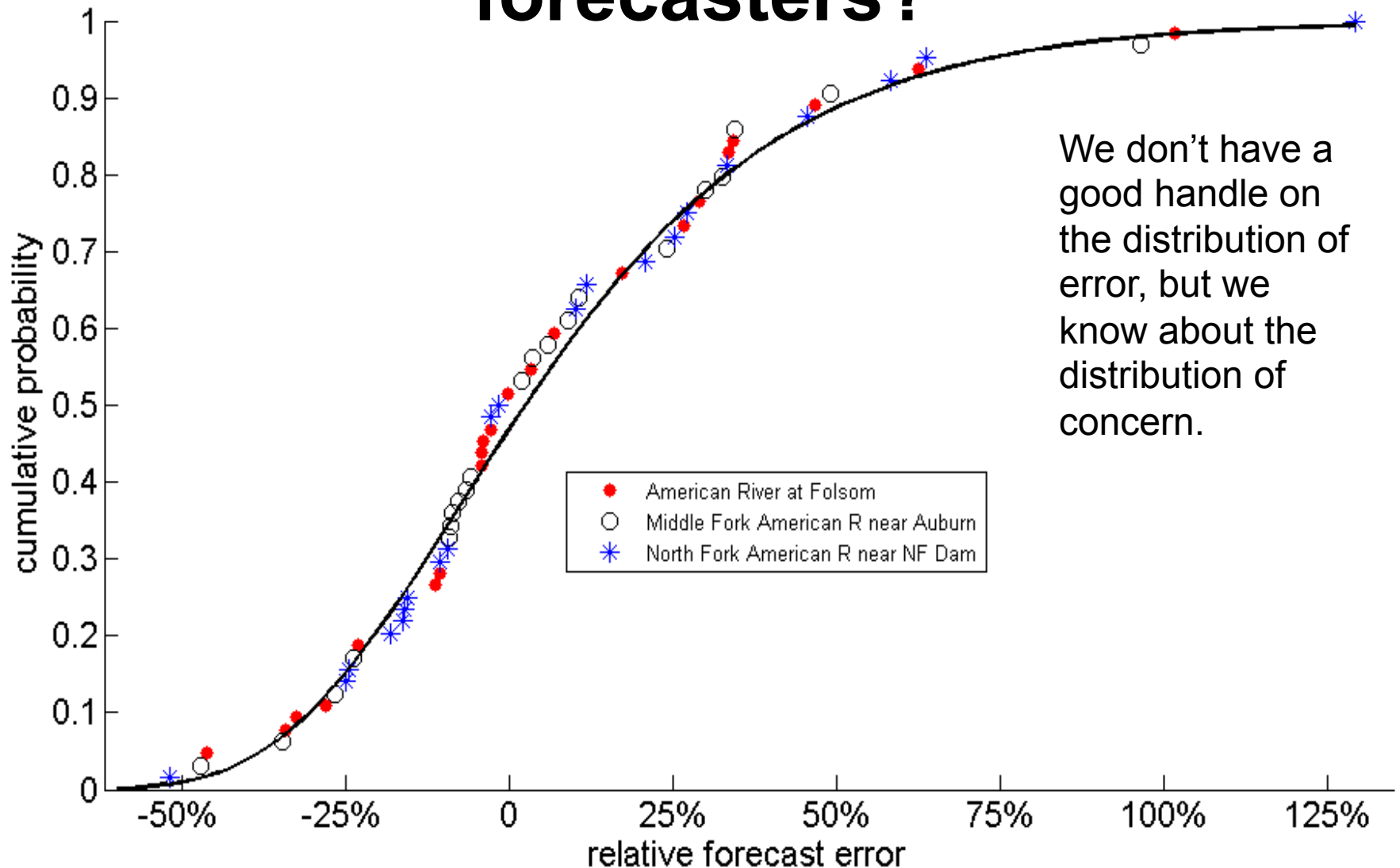
29 August 2011



US Army Corps of Engineers
BUILDING STRONG®



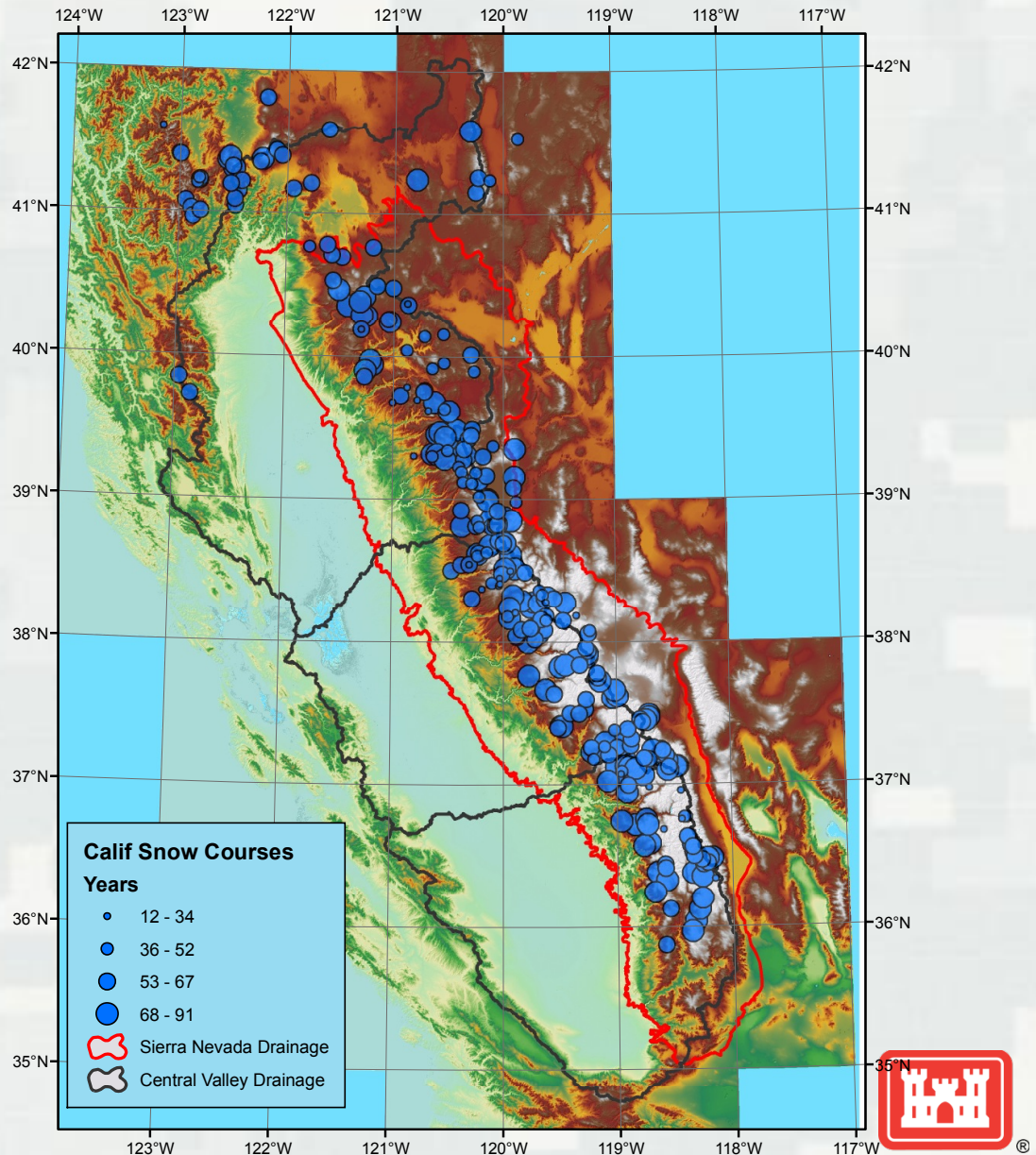
Does snow present a problem for forecasters?



We don't have a good handle on the distribution of error, but we know about the distribution of concern.

But we measure and measure!

- 398 snow courses in California
- 213 have “long-term” data:
 - ▶ Measurements in more than 50 years
 - ▶ Starting by 1950
 - ▶ Continuing through 1995

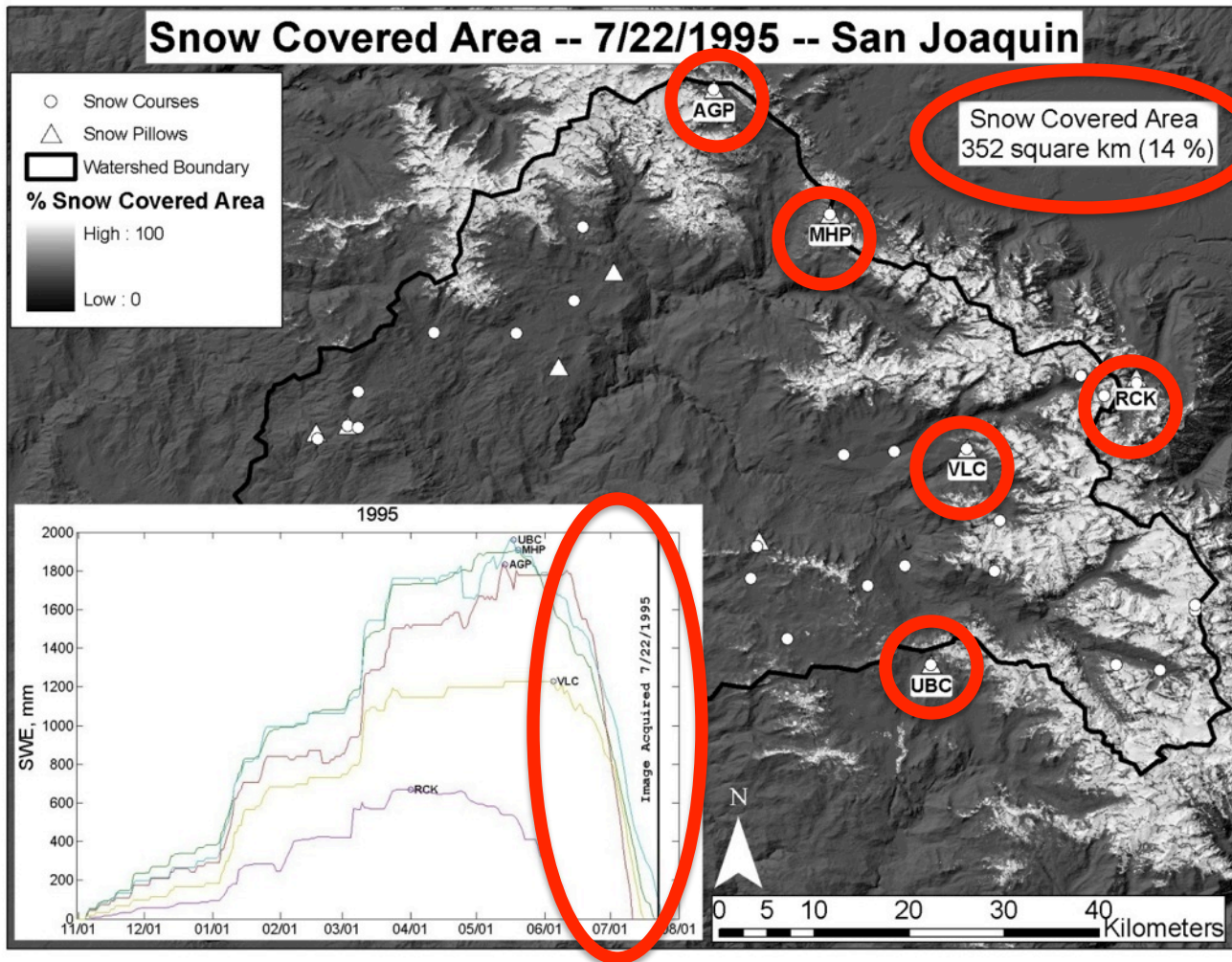


What more can we do? What don't we know?

- Timing of snow runoff results a combinations from areal depletion and vertical processes (mountains), while volumes seem to wander extremes.
 - ▶ Mapping snow helps us understand what today looks like, spatially.
 - ▶ Measuring snow in critical zones helps us monitor relations between area and volume.
 - ▶ Modeling snow can tell us the trends in estimated volumes.



Interpolation issues: persistent and high elevation snowpack



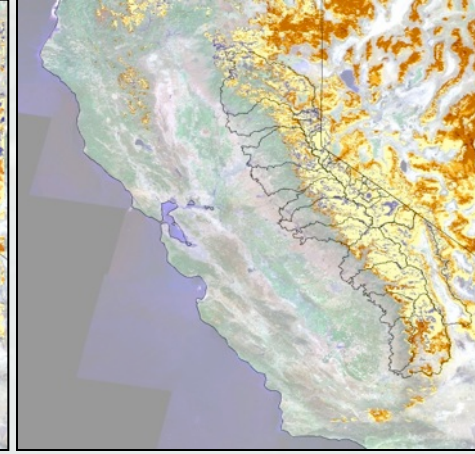
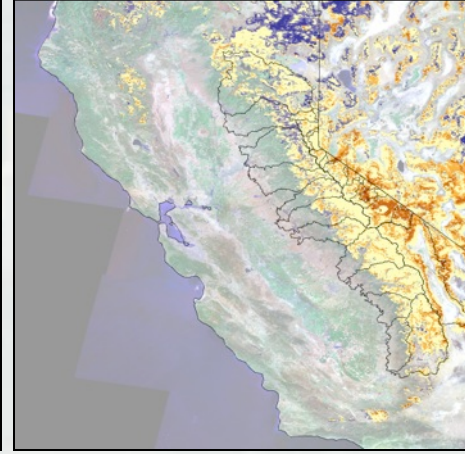
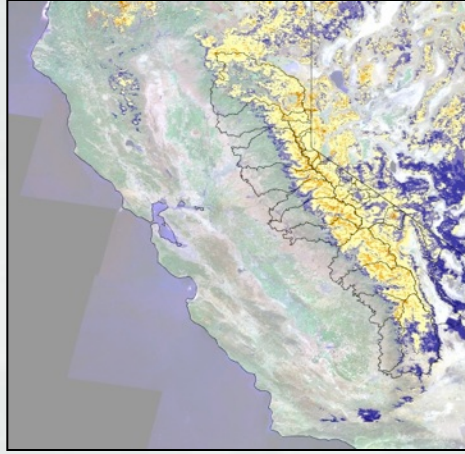
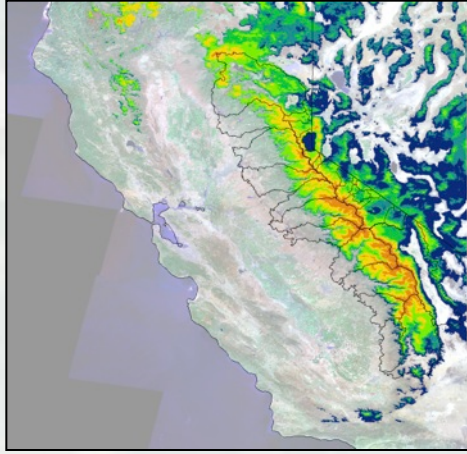
Snow extent shows us persistence, which exhibits anomalies:

2001 – 2007 Average

2001

2002

2003



avg. persistence, months



anomaly, months

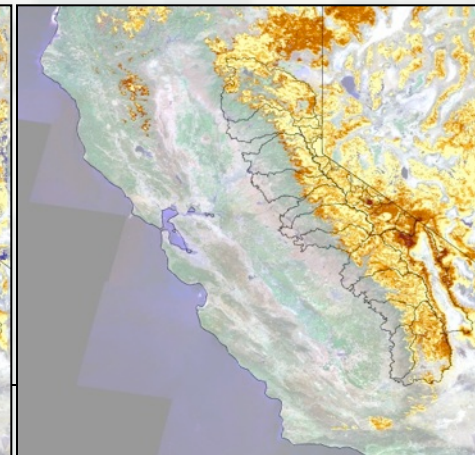
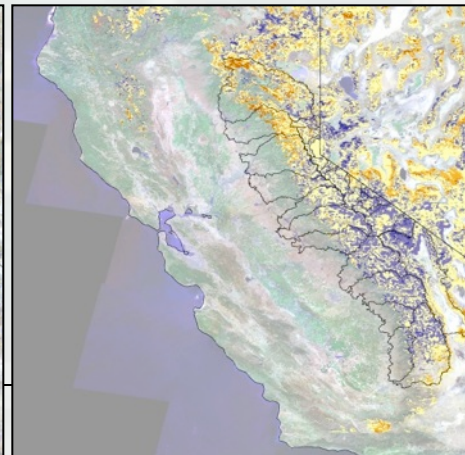
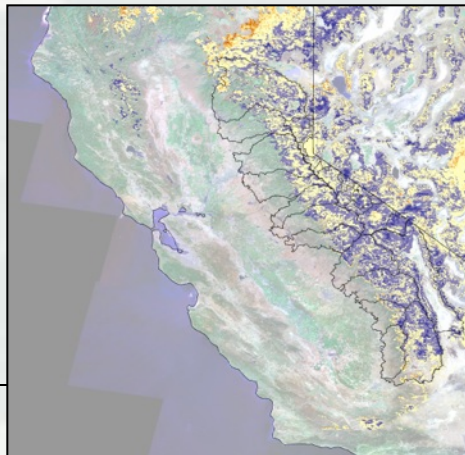
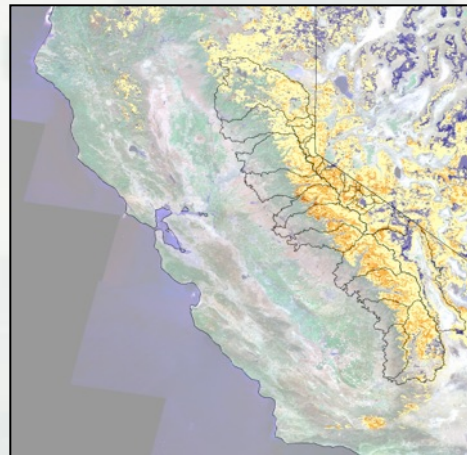


2004

2005

2006

2007



What if we merge area with observations?

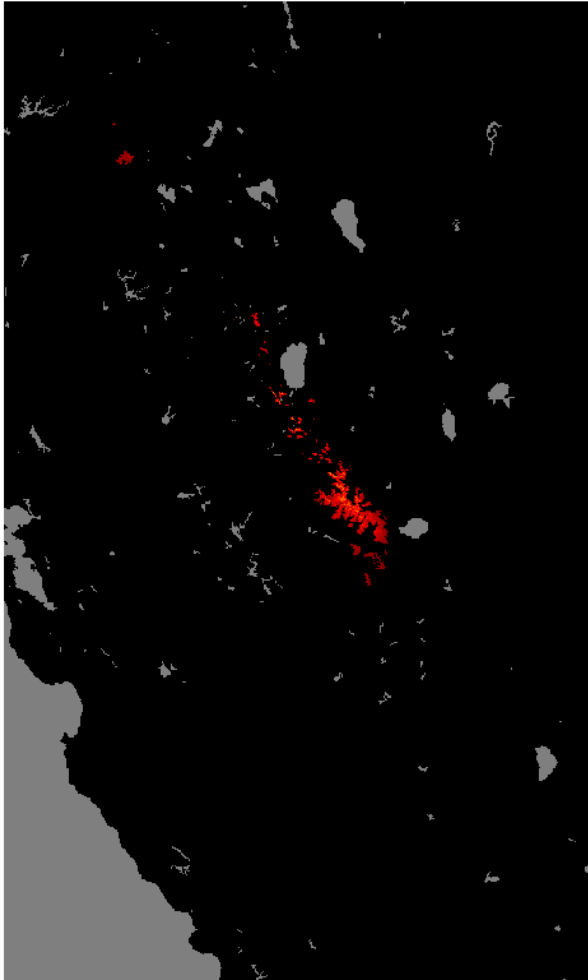
- Spatial interpolation gives us significant errors due to the locations of ground observations; not many where we see the action (low and high).
- “Spatial calorimetry” exploits the persistence maps, merging observations to give us a hind site “reanalysis”.



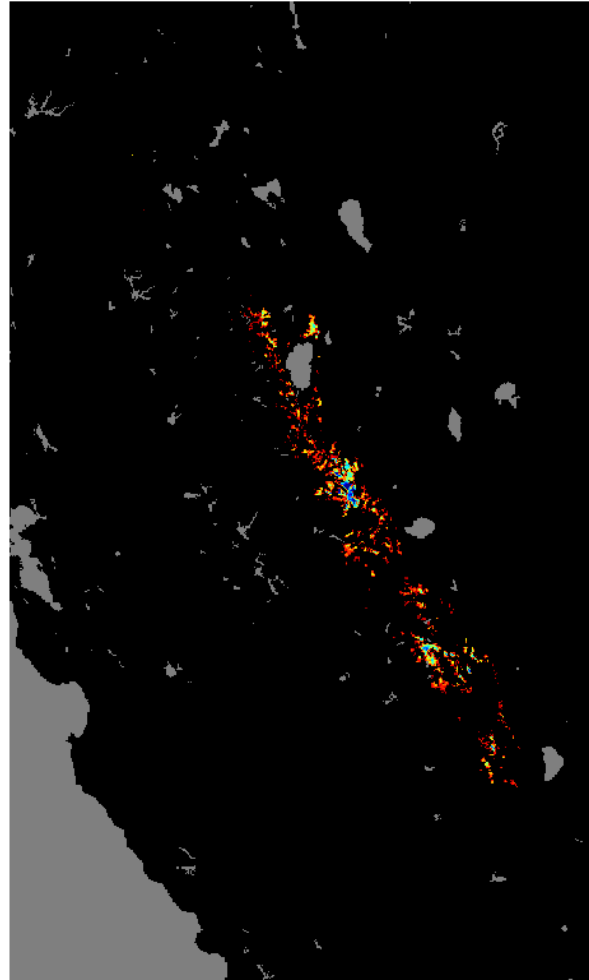
Lets look how these compare for 2006.

May 11

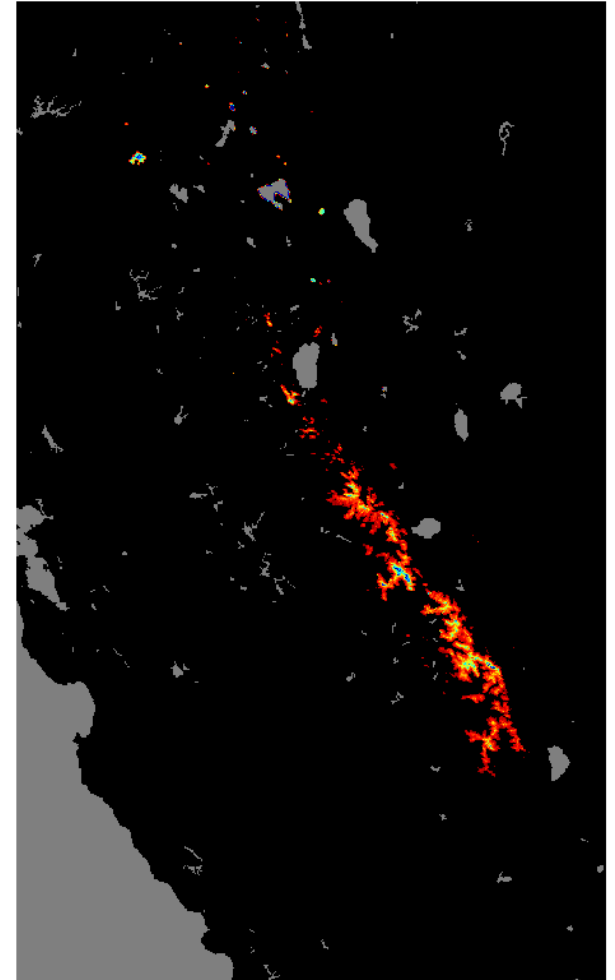
SWE from Interpolation



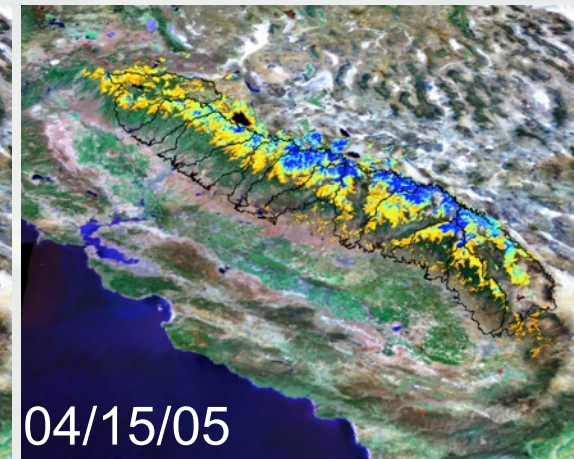
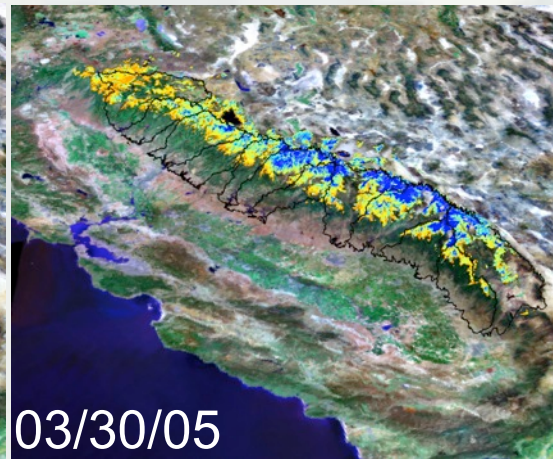
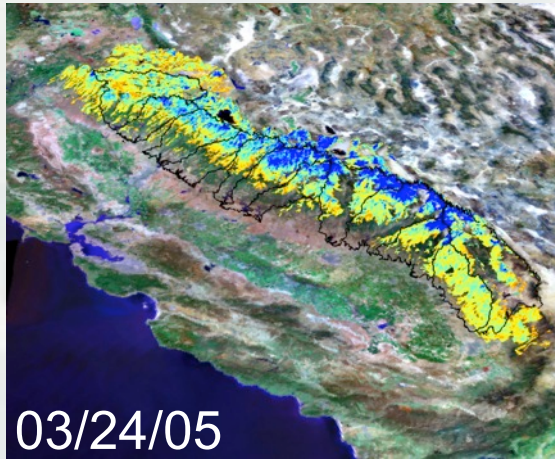
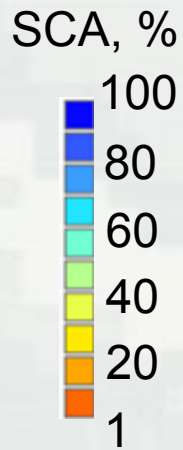
SWE from SNODAS



SWE from Reconstruction



Range-Scale Snow Cover: MODIS

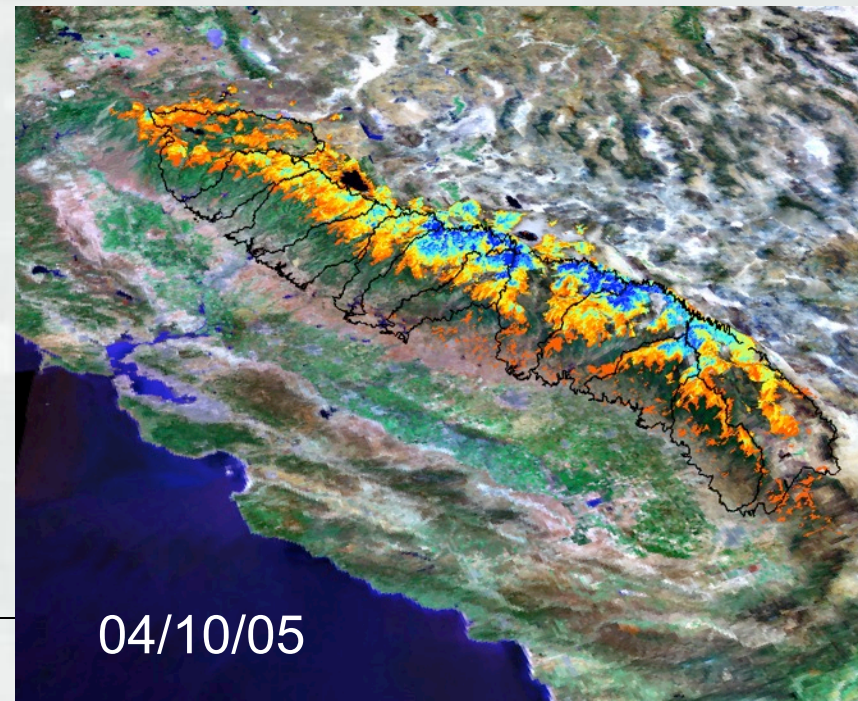


MODSCAG – Dozier et al., in press

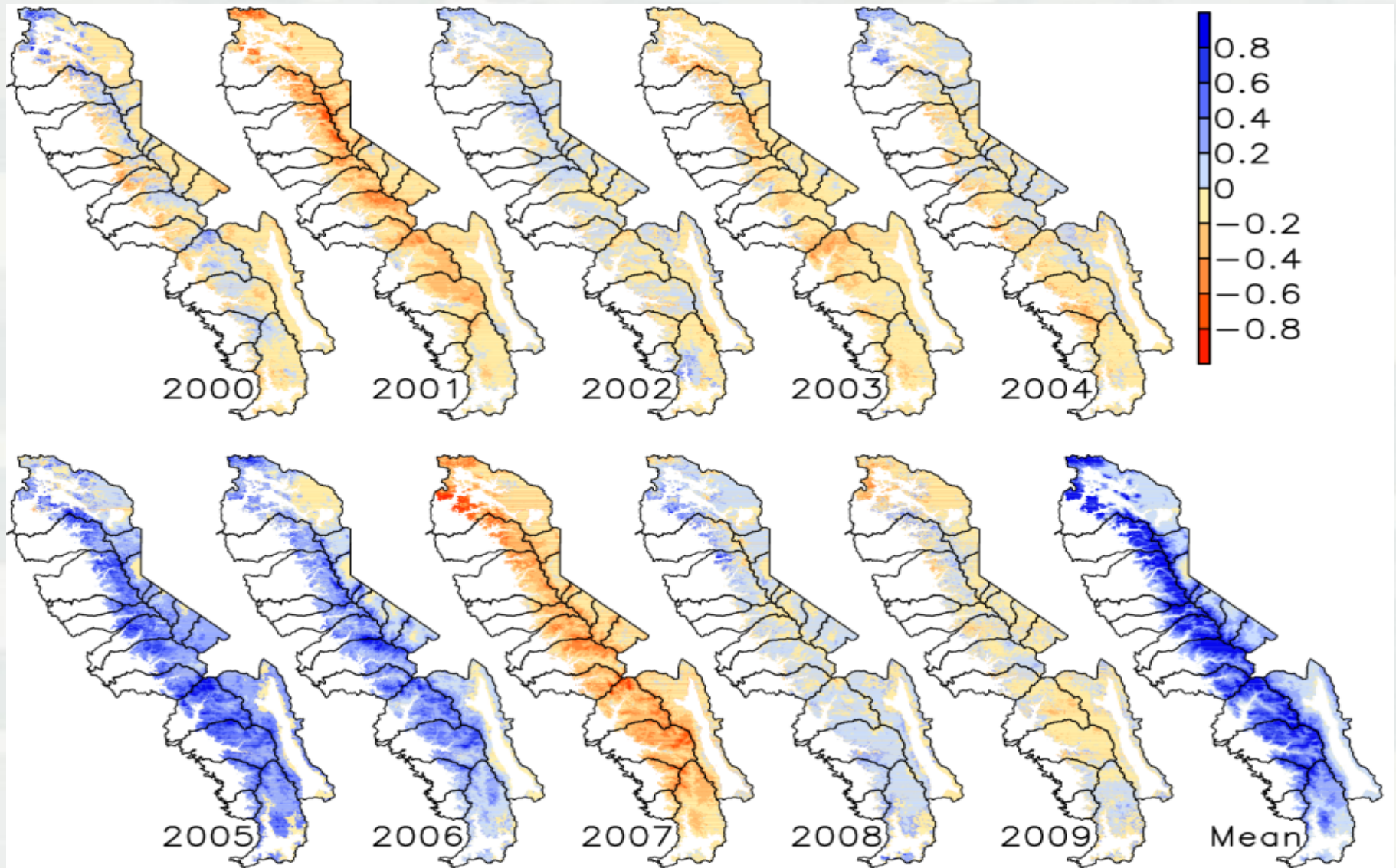
Due to lower initial mass
snow disappeared
rapidly in N. Sierra.

Areas with persistent
snow cover had
greatest mass.

SWE, cm



Snow Water Equivalent Anomalies



Guan, Molotch, Dozier, Painter in prep.

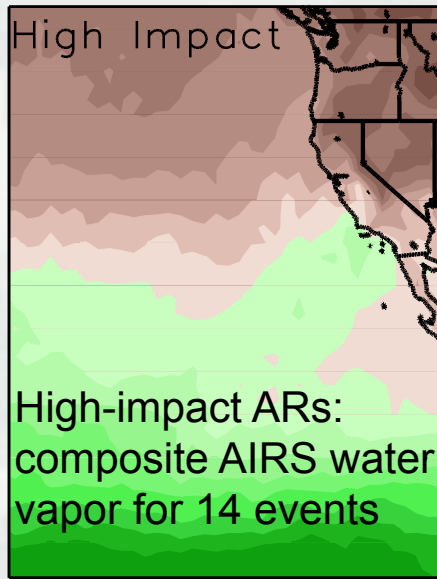
BUILDING STRONG®

So what? Why go to all this effort?

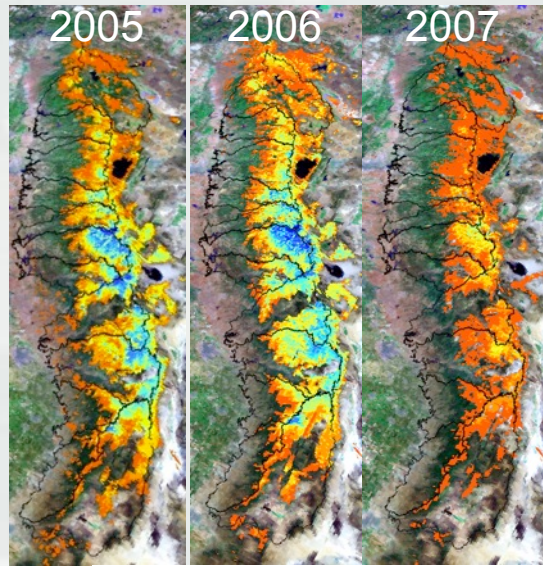
- Scientifically satisfying, since we have a better idea of what we've missed.
 - ▶ *Confirmed what we suspected; large “shallow” low elevation snow and the high country pack explain much.*
- Compliments emerging ideas about precipitation delivery and “integrated investigations”.
- Opens the door to new operational analyses.



This type of analysis links Atmospheric Rivers and Snow Accumulation in the Sierra Nevada

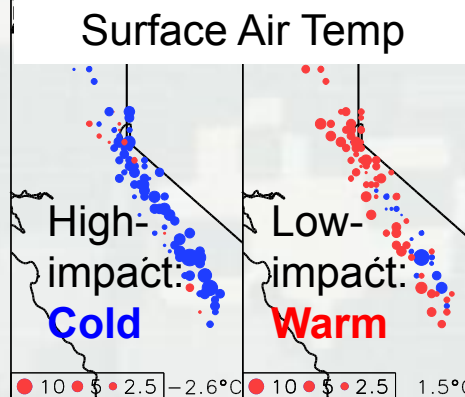
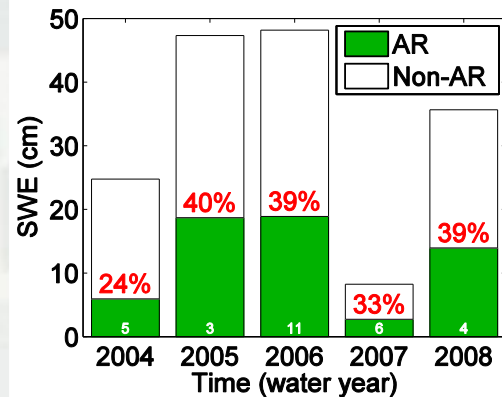


MODIS-model recon SWE



- Atmospheric rivers account for up to ~40% of the total seasonal snow accumulation

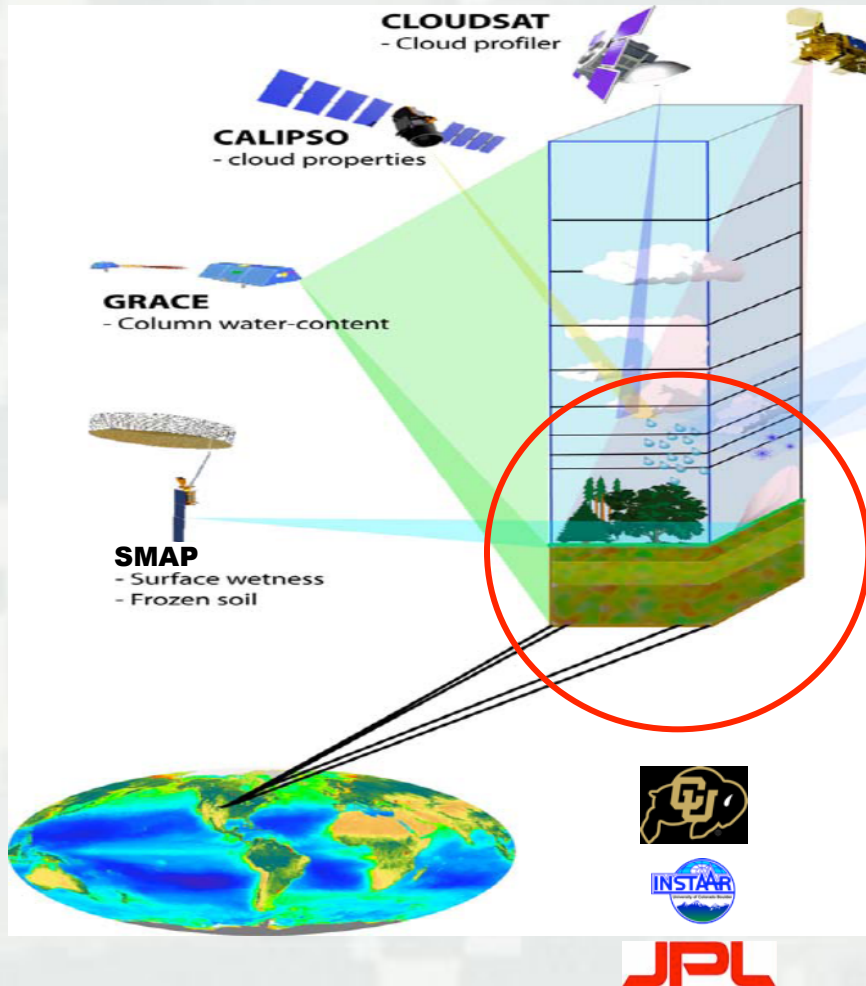
- Surface air temperature partly controls amount of snow accumulation



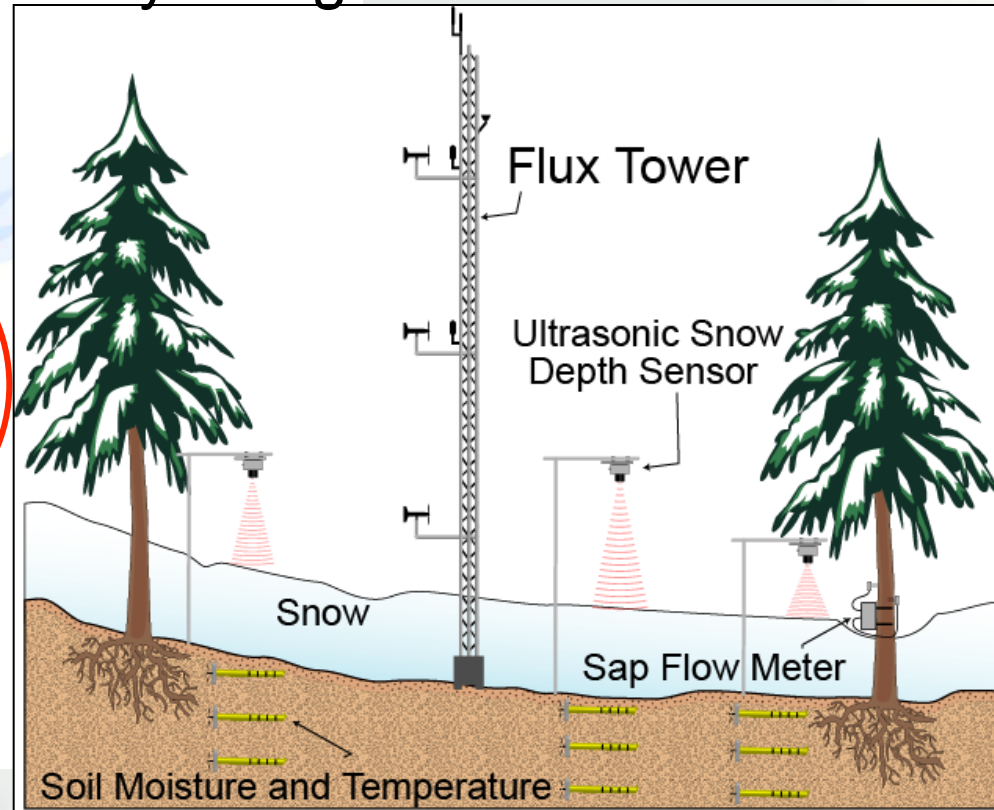
Results illustrate utility of the SWE reconstruction product in understanding hydrologic impacts of extreme precip. Events.



This level of effort broadens our topic spectrum.



Hydrologic Instrument Cluster



Can we use the reconstruction to index the past?

- Operational updating and compilation of a SWE library:
 - ▶ We have the tools to exploit large data sets to answer a variety of questions, scientific, operational, and for communicating with the public.
 - ▶ Based on SWE data stacks, we can ask about the most similar priors, and what ran off then.

